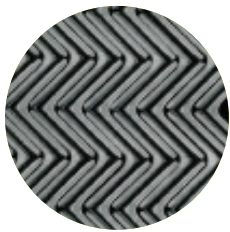




Mill Product Guide



it's what's
inside
that counts



Equal Angles	1
Unequal Angles	2
Flats	3
Channels	5
Rebar	6
Spooled Rebar	6
Coiled Rebar	6
Squares	6
Rounds	7
SBQ Rounds	7
T-Post Stock	8
Rub Rail	8
Checked Leg Angle	8
Earth Bar	8
Wire Rod Coil	8
Grades	9

•Mill produces +Mill has capability to produce, please inquire *Mill stocks but does not produce

Equal Angles	Alabama	Arizona	Arkansas	California	Florida	New Jersey	Oklahoma	South Carolina	Tennessee	Texas
1 x 1 x .109			•							
1 x 1 x 1/8			•					•		•
1 x 1 x 3/16			•					•		•
1 x 1 x 1/4			•					•		•
1-1/4 x 1-1/4 x .109			•							
1-1/4 x 1-1/4 x 1/8			•					•		•
1-1/4 x 1-1/4 x 3/16			•					•		•
1-1/4 x 1-1/4 x 1/4			•					•		•
1-1/2 x 1-1/2 x .109			•							
1-1/2 x 1-1/2 x 1/8			•					•		•
1-1/2 x 1-1/2 x 3/16			•					•		•
1-1/2 x 1-1/2 x 1/4			•					•		•
1-3/4 x 1-3/4 x 1/8			•					•		+
1-3/4 x 1-3/4 x 3/16			•					•		•
1-3/4 x 1-3/4 x 1/4			•					•		+
2 x 2 x 1/8			•					•		•
2 x 2 x 3/16			•					•		•
2 x 2 x 1/4			•					•		•
2 x 2 x 5/16								•		
2 x 2 x 3/8								•		•
2-1/2 x 2-1/2 x 3/16								•		•
2-1/2 x 2-1/2 x 1/4								•		•
2-1/2 x 2-1/2 x 5/16								•		+
2-1/2 x 2-1/2 x 3/8								•		•
2-1/2 x 2-1/2 x 1/2										•
3 x 3 x 3/16	•							•		•
3 x 3 x 1/4	•							•		•
3 x 3 x 5/16	•							•		•
3 x 3 x 3/8	•							•		•
3 x 3 x 1/2	•							•		•
3-1/2 x 3-1/2 x 1/4	•									•
3-1/2 x 3-1/2 x 5/16	•									•
3-1/2 x 3-1/2 x 3/8	•									•
3-1/2 x 3-1/2 x 1/2	•									•
4 x 4 x 1/4	•									•
4 x 4 x 5/16	•									•
4 x 4 x 3/8	•									•
4 x 4 x 7/16	•									
4 x 4 x 1/2	•									•
4 x 4 x 5/8	•									
4 x 4 x 3/4	•									
5 x 5 x 5/16	•									*
5 x 5 x 3/8	•									*
5 x 5 x 7/16	•									
5 x 5 x 1/2	•									*
5 x 5 x 5/8	•									
5 x 5 x 3/4	•									
5 x 5 x 7/8	•									
6 x 6 x 5/16	•									*
6 x 6 x 3/8	•									*
6 x 6 x 7/16	•									
6 x 6 x 1/2	•									*
6 x 6 x 5/8	•									

•Mill produces +Mill has capability to produce, please inquire *Mill stocks but does not produce

**Equal Angles
Cont.**

	Alabama	Arizona	Arkansas	California	Florida	New Jersey	Oklahoma	South Carolina	Tennessee	Texas
6 x 6 x 3/4	•									
6 x 6 x 7/8	•									
6 x 6 x 1	•									

Unequal Angles

	Alabama	Arizona	Arkansas	California	Florida	New Jersey	Oklahoma	South Carolina	Tennessee	Texas
2 x 1-1/2 x 1/8			•							•
2 x 1-1/2 x 3/16			•							•
2 x 1-1/2 x 1/4										•
2-1/2 x 2 x 3/16								•		•
2-1/2 x 2 x 1/4								•		•
3 x 2 x 3/16								•		•
3 x 2 x 1/4								•		•
3 x 2 x 3/8								•		•
3 x 2-1/2 x 3/16										•
3 x 2-1/2 x 1/4	•									•
3 x 2-1/2 x 5/16	•									
3 x 2-1/2 x 3/8	•									
3-1/2 x 2-1/2 x 1/4	•									•
3-1/2 x 2-1/2 x 5/16	•									
3-1/2 x 2-1/2 x 3/8	•									•
3-1/2 x 2-1/2 x 1/2	•									
3-1/2 x 3 x 1/4	•									•
3-1/2 x 3 x 5/16	•									•
3-1/2 x 3 x 3/8	•									•
3-1/2 x 3 x 1/2	•									
4 x 3 x 1/4	•									•
4 x 3 x 5/16	•									•
4 x 3 x 3/8	•									•
4 x 3 x 1/2	•									•
4 x 3-1/2 x 1/4	•									•
4 x 3-1/2 x 5/16	•									•
4 x 3-1/2 x 3/8	•									•
4 x 3-1/2 x 1/2	•									
5 x 3 x 1/4	•									•
5 x 3 x 5/16	•									•
5 x 3 x 3/8	•									•
5 x 3 x 1/2	•									•
5 x 3-1/2 x 1/4	•									*
5 x 3-1/2 x 5/16	•									*
5 x 3-1/2 x 3/8	•									*
5 x 3-1/2 x 1/2	•									
6 x 3-1/2 x 5/16	•									*
6 x 3-1/2 x 3/8	•									*
6 x 3-1/2 x 1/2	•									
6 x 4 x 5/16	•									*
6 x 4 x 3/8	•									*
6 x 4 x 1/2	•									*
6 x 4 x 5/8	•									
6 x 4 x 3/4	•									
7 x 4 x 3/8	•									*
7 x 4 x 1/2	•									*

•Mill produces +Mill has capability to produce, please inquire *Mill stocks but does not produce

Flats	Alabama	Arizona	Arkansas	California	Florida	New Jersey	Oklahoma	South Carolina	Tennessee	Texas
1 x 1/8			•							
1 x 3/16			•							
1 x 1/4			•							*
1-1/2 x 1/8			•							
1-1/2 x 3/16			•							*
1-1/2 x 1/4								•		•
1-1/2 x 3/8								•		•
1-1/2 x 1/2								•		•
1-1/2 x 5/8										•
2 x 3/16			•							*
2 x 1/4			•					•		•
2 x 5/16								•		
2 x 3/8								•		•
2 x 1/2								•		•
2 x 5/8								•		•
2 x 3/4								•		•
2 x 1								•		•
2-1/2 x 1/4								•		•
2-1/2 x 3/8								•		•
2-1/2 x 1/2								•		•
2-1/2 x 5/8										•
2-1/2 x 3/4								•		•
2-1/2 x 1								•		
3 x 3/16			•							
3 x 1/4								•		•
3 x 3/8			•					•		•
3 x 1/2								•		•
3 x 5/8								•		•
3 x 3/4								•		•
3 x 1								•		•
3 x 1-1/4	•									
3 x 1-1/2	•									
3 x 2	•									
3-1/2 x 1/4	•							•		•
3-1/2 x 3/8	•							•		•
3-1/2 x 5/16										
3-1/2 x 1/2	•							•		•
3-1/2 x 5/8	•							•		
3-1/2 x 3/4								•		
3-1/2 x 1								•		
3-1/2 x 1-1/4								•		
4 x 1/4	•							•		•
4 x 5/16	•							•		
4 x 3/8	•							•		•
4 x 1/2	•							•		•
4 x 5/8	•							•		•
4 x 3/4	•							•		•
4 x 7/8	•							•		
4 x 1	•							•		•
4 x 1-1/4	•									
4 x 1-1/2	•									
4 x 2	•									
4-1/2 x 1/4	•							•		•

•Mill produces +Mill has capability to produce, please inquire *Mill stocks but does not produce

Flats Cont.	Alabama	Arizona	Arkansas	California	Florida	New Jersey	Oklahoma	South Carolina	Tennessee	Texas
4-1/2 x 3/8	•							•		•
4-1/2 x 1/2	•							•		•
4-1/2 x 5/8	•							•		
4-1/2 x 3/4	•							•		
4-1/2 x 1	•							•		
5 x 1/4	•									•
5 x 5/16	•									+
5 x 3/8	•									•
5 x 7/16	•									
5 x 1/2	•									•
5 x 5/8	•									+
5 x 3/4	•									•
5 x 7/8	•									
5 x 1	•									•
5 x 1-1/4	•									
5 x 1-1/2	•									
5 x 2	•									
5-1/2 x 3/8	•									
5-1/2 x 5/16	•									
5-1/2 x 1/2	•									
5-1/2 x 3/4	•									
5-1/2 x 1	•									
6 x 1/4	•									•
6 x 5/16	•									•
6 x 3/8	•									•
6 x 7/16	•									
6 x 1/2	•									•
6 x 5/8	•									•
6 x 3/4	•									•
6 x 7/8	•									
6 x 1	•									•
6 x 1-1/4	•									
6 x 1-1/2	•									
6 x 2	•									
6-1/2 x 1-1/4	•									
7 x 1/4	•									
7 x 5/16	•									
7 x 3/8	•									*
7 x 7/16	•									
7 x 1/2	•									*
7 x 5/8	•									
7 x 3/4	•									*
7 x 7/8	•									
7 x 1	•									
7 x 1-1/4	•									
7 x 1-1/2	•									
8 x 1/4	•									*
8 x 5/16	•									*
8 x 3/8	•									*
8 x 7/16	•									
8 x 1/2	•									*
8 x 5/8	•									*
8 x 3/4	•									*

•Mill produces +Mill has capability to produce, please inquire *Mill stocks but does not produce

Flats Cont.	Alabama	Arizona	Arkansas	California	Florida	New Jersey	Oklahoma	South Carolina	Tennessee	Texas
8 x 7/8	•									
8 x 1	•									*
8 x 1-1/8	•									
8 x 1-1/4	•									
8 x 1-1/2	•									
8 x 2	•									
9 x 3/8	•									
9 x 1/2	•									
9 x 5/8	•									
9 x 3/4	•									
9 x 1	•									
10 x 3/8	•									*
10 x 1/2	•									*
10 x 5/8	•									
10 x 3/4	•									*
10 x 7/8										
10 x 1	•									*
11 x 3/8	•									
11 x 1/2	•									
11 x 5/8	•									
11 x 3/4	•									
11 x 7/8										
11 x 1	•									
12 x 3/8	•									*
12 x 1/2	•									*
12 x 5/8	•									
12 x 3/4	•									*
12 x 1	•									*

Channels	Alabama	Arizona	Arkansas	California	Florida	New Jersey	Oklahoma	South Carolina	Tennessee	Texas
3 x 3.5								•		•
3 x 4.1								•		•
3 x 5								•		•
3 x 6								•		•
4 x 4.5	•									•
4 x 5.4	•									•
4 x 6.25	•									•
4 x 7.25	•									•
5 x 6.7	•									•
5 x 9	•									•
6 x 8.2	•									•
6 x 10.5	•									•
6 x 13	•									•
7 x 9.8	•									*
7 x 12.25	•									
7 x 14.75	•									
8 x 8.5	•									*
8 x 11.5	•									*
8 x 13.75	•									*
8 x 18.75	•									*

•Mill produces +Mill has capability to produce, please inquire *Mill stocks but does not produce

Rebar	Alabama	Arizona	Arkansas	California	Florida	New Jersey	Oklahoma	South Carolina	Tennessee	Texas
#3 (10MM)		*	+	*
10MM (metric)					.	.			.	
#4 (13MM)		.	+	*
15MM (metric)						.				
#5 (16MM)		.	+	*
#6 (19MM)		.	+	*
20MM (metric)						.				
#7 (22MM)		.	+	*
#8 (25MM)		.		*
25MM (metric)					.	.				
#9 (29MM)		.		*
#10 (32MM)		.		*
#11 (36MM)		.		*
#14 (43MM)				*		.		.		.
#18 (57MM)				*		.		.		.
Spooled Rebar	Alabama	Arizona	Arkansas	California	Florida	New Jersey	Oklahoma	South Carolina	Tennessee	Texas
#3 (10MM)		*			.		.			
#4 (13MM)		.			.		.			
#5 (16MM)		.			.		.			
#6 (19MM)		.					.			
Coiled Rebar	Alabama	Arizona	Arkansas	California	Florida	New Jersey	Oklahoma	South Carolina	Tennessee	Texas
#3 (10MM)					.					
#4 (13MM)					.					
#5 (16MM)					.					

Squares	Alabama	Arizona	Arkansas	California	Florida	New Jersey	Oklahoma	South Carolina	Tennessee	Texas
1/2								.		.
5/8								.		.
3/4								.		.
1								.		.
1-1/4								.		.
1-1/2								.		.
1-3/4								.		.
2								.		.
2-1/4										+
2-1/2										.
3										.

•Mill produces +Mill has capability to produce, please inquire *Mill stocks but does not produce

Rounds	Alabama	Arizona	Arkansas	California	Florida	New Jersey	Oklahoma	South Carolina	Tennessee	Texas
1/2						•		•		•
9/16						•		•		•
5/8						•		•		•
.680										•
11/16								•		+
3/4			+			•		•		•
.797										•
13/16								•		+
7/8			+					•		•
.910										•
1						•		•		•
1.025										•
1-1/8								•		•
1.150										•
1-1/4								•		•
1-3/8								•		+
1.383										•
1-1/2								•		•
1.613										•
1-5/8								•		•
1-3/4								•		•
1.848										•
2								•		•
2-1/4								•		•
2-1/2								•		•
2-3/4										•
3								•		•
3-1/4										•
3-1/2										•
3-3/4										•

SBQ Rounds	Alabama	Arizona	Arkansas	California	Florida	New Jersey	Oklahoma	South Carolina	Tennessee	Texas
1/2										+
9/16										+
5/8										+
.680										+
11/16										+
3/4										+
.797										+
13/16										+
7/8										+
.910										+
1										+
1.025										+
1-1/8										+
1.150										+
1-1/4										+
1-3/8										+
1.383										+
1-1/2										+

•Mill produces +Mill has capability to produce, please inquire *Mill stocks but does not produce

SBQ Rounds Cont.	Alabama	Arizona	Arkansas	California	Florida	New Jersey	Oklahoma	South Carolina	Tennessee	Texas
1.613										+
1-3/4										+
1.848										+
2										+
2-1/4										+
2-1/2										+
2-3/4										+
3										+
3-1/4										+
3-1/2										+
3-3/4										+

T-Post Stock	Alabama	Arizona	Arkansas	California	Florida	New Jersey	Oklahoma	South Carolina	Tennessee	Texas
#0.85			•							
#0.95			•							
#1.25		•	•				+			+
#1.33		•	•				+			+

Rub Rail	Alabama	Arizona	Arkansas	California	Florida	New Jersey	Oklahoma	South Carolina	Tennessee	Texas
3/8			•							

Checked Leg Angle	Alabama	Arizona	Arkansas	California	Florida	New Jersey	Oklahoma	South Carolina	Tennessee	Texas
1/8			•							

Earth Bar	Alabama	Arizona	Arkansas	California	Florida	New Jersey	Oklahoma	South Carolina	Tennessee	Texas
4MM			•							
6MM			•							
4'			•							
5'			•							

Wire Rod Coil	Alabama	Arizona	Arkansas	California	Florida	New Jersey	Oklahoma	South Carolina	Tennessee	Texas
7/32					•					
1/4					•					
9/32					•					
15/64					•					
19/64					•					
5/16					•					
11/32					•					
3/8					•					
13/32					•					
7/16					•					
1/2					•					
5/8					•					
9/16					•					
11/16					•					

Grades

CMC Steel Alabama	Bars & Structural: ASTM A36; ASTM A529-50/55; ASTM A572-50/55; ASTM A588; ASTM A709-36/50; AISI 1010 TO 1090; AASHTO M270-36/50/50W; ABS GRADES A, B, AH32, AH36; Military MIL-S-22698 C, CLASS U - GRADE A, B, AH36; CANADIAN CSA G40.21 44W, 44WT, 50W, 50WT, 50A, 50AT; 1 SERIES BPS (CMC Proprietary Multi-Grade)
CMC Steel Arizona	T-Post: ASTM A702 Rebar: ASTM A615-40; ASTM A615-60; ASTM A615-75; ASTM A615-80; ASTM A706-60; ASTM A706-80; CryoSTEEL (EN14620-3 Annex A3) Bars & Structural: ASTM A36; ASTM A529-50; ASTM A572-50
CMC Steel Arkansas	T-Post: ASTM A702 Rebar: ASTM A615-40; ASTM A615-60 Bars & Structural: ASTM A36; ASTM A529-50; ASTM A572-50
CMC California Rebar Depot	Rebar: ASTM A615-40; ASTM A615-60; ASTM A615-75; ASTM A615-80; ASTM A706-60; ASTM A706-80; ASTM A706-60/A615-60 (Dual)
CMC Steel Florida	Rebar: ASTM A615-40; ASTM A615-60; ASTM A615-75; ASTM A615-80; ASTM A615-100; ASTM A706-60; ASTM A706-80; ASTM A615-60/A706-60 (Dual) Wire Rod: 1006; 1008; 1010; 1012; 1015; 1018; 1022; 1024; 1026; 1030
CMC Steel New Jersey	Rebar: ASTM A615-40; ASTM A615-60; ASTM A615-75; ASTM A615-80; ASTM A615-100; ASTM A706-60; ASTM A706-80
CMC Steel Oklahoma	T-Post: ASTM A702 Rebar: ASTM A615-40; ASTM A615-60; ASTM A615-75; ASTM A615-80; ASTM A706-60; ASTM A706-80 Spooled Rebar: ASTM A615-40; ASTM A615-60; ASTM A615-75; ASTM A615-80; ASTM A706-60; ASTM A706-80 Spooled Rounds: ASTM A615-40; ASTM A615-60; ASTM A615-75; ASTM A615-80
CMC Steel South Carolina	T-Post: ASTM A702 Rebar: ASTM A615-40; ASTM A615-60; ASTM A615-75; ASTM A615-80; ASTM A615-100; ASTM A706-60; ASTM A706-80; ASTM A1035 CL; ASTM A1035 CM; ASTM A1035 CS Bars & Structural: ASTM A36; ASTM A529-50/55; ASTM A572-50/55; ASTM A588; ASTM A709-36/50; AISI 1010 TO 090; AASHTO M270-36/50/50W; ABS GRADES A, B, AH32, AH36; Military MIL-S-22698 C, CLASS U - GRADE A, B, AH36; CANADIAN CSA G40.21 44W, 44WT, 50W, 50WT, 50A, 50AT; 1 SERIES BPS (CMC Proprietary Multi-Grade)
CMC Steel Tennessee	Rebar: ASTM A615-40; ASTM A615-60; ASTM A615-75; ASTM A615-80; ASTM A706-60; ASTM A706-80
CMC Steel Texas	Rebar: ASTM A615-40; ASTM A615-60; ASTM A615-75; ASTM A615-80; ASTM A615-100; ASTM A706-60; ASTM A706-80; ASTM A1035 CL; ASTM A1035 CM; ASTM A1035 CS Bars and Structural: ASTM A36; ASTM A529-50/55; ASTM A572-50/55; ASTM A588; ASTM A709-36/50; AASHTO M270-36/50/50W; ABS GRADES A, B, AH32, AH36; CLASS U - GRADE A, B, AH36; CANADIAN CSA G40.21 44W, 44WT, 50W, 50WT, 50A, 50AT; 1 SERIES BPS (CMC Proprietary Multi-Grade) SBQ: AISI 1016 through 1070, 1117, 1137, 1157, 1541; SAE 4047, 4130, 4140 (Please inquire)

CMC Steel Sales Contact Information

CMC Steel Alabama

Phone: 800.621.0262
Email: millsales-al@cmc.com

CMC Steel Arizona

Phone: 888.641.8956
Email: millsales-az@cmc.com

CMC Steel Arkansas

Phone: 800.258.0022
Email: millsales-ar@cmc.com

CMC Steel California Rebar Depot

Phone: 909.689.0394
Email: millsales-ca@cmc.com

CMC Steel Florida

Phone: 888.870.0766
Email: millsales-fl@cmc.com

CMC Steel New Jersey

Phone: 888.870.0766
Email: millsales-nj@cmc.com

CMC Steel Oklahoma

Phone: 800.227.6489
Email: millsales-ok@cmc.com

CMC Steel South Carolina

Phone: 800.621.0262
Email: millsales-sc@cmc.com

CMC Steel Tennessee

Phone: 888.870.0766
Email: millsales-tn@cmc.com

CMC Steel Texas

Phone: 800.227.6489
Email: millsales-tx@cmc.com

